



2019

S U M M E R / F A L L
P R O M O P A C K

GROOVING & CUT-OFF Offers



VALID THROUGH
December 31, 2019

KPTI Company Overview

Established in April 2014, KPTI unifies two of the world's leading cutting tool manufacturers, Kyocera Tycom Corporation (KTC) and the Cutting Tool Division of Kyocera Industrial Ceramics Corporation (KICC-CT).

The new company creates a combined enterprise that optimizes the strengths of both organizations and facilitates expansion of Kyocera's overall cutting tool-related business in North America. The new combined entity will unify cutting tool resources to create greater efficiencies while positioning the new organization for continued success.

Customers will benefit from a unified sales and support team offering improved customer service and an expanded portfolio of cutting tool products and solutions for the automotive, aerospace, general machining, medical, power generation, printed circuit board and steel markets.

KPTI North American Operations



Costa Mesa, CA

Wapakoneta, OH

Hendersonville, NC



Administration & Manufacturing

- Administration & Accounting Center
- Micro-Tools Manufacturing
- Printed Circuit Board Drill Manufacturing
- Micro-Tools & PCB Sales & Customer Service Center

Steel Tool Holder Manufacturing

- Indexable Drills
- Milling End Mills & Face Mills
- Boring Bars
- Turning and Grooving Holders
- API Ring Groovers

Sales, Tech Center & Marketing

- North American Tech Center
- North American Sales, Marketing & Customer Service Center

KPTI

Manufactured Products



Steel Toolholders for Milling, Turning, Grooving, Threading and Drilling Metal



Indexable metal cutting inserts made of carbide, ceramic, cermet, Cubic Boron Nitride, and Polycrystalline diamond



Solid carbide cutting tools for tight tolerance and micro-diameter metal cutting applications

KPTI Markets Served



Automotive



Aerospace



Medical



Printed Circuit Board



Power Generation

All 2019 Summer / Fall Offers Valid through December 31, 2019

All promotional items are available exclusively through Authorized North American Kyocera Precision Tool Distributors.

Please use specified Promo Code or Kit Part Number when placing orders. To locate a distributor visit www.kyoceraprecisiontools.com/locate. Prices shown valid in U.S. only.

Explore the Many Ways to Save with the Kyocera 2019 Summer / Fall Promo Pack

In 2019 Kyocera Precision Tools, Inc. is offering more ways to advance your productivity while also reducing your tooling costs. With our wide array of indexable and solid round cutting tools, we strive to be your primary source for high-quality, cost-effective solutions for all of your metal cutting needs. Read below for our latest cost-savings opportunities.

To learn more about KPTI, please visit www.kyoceraprecisiontools.com.

Grooving & Cut-Off Solutions

KGD SwitchBlade Style.....	Buy 30 Inserts, Get a Free SwitchBlade Style Holder	P6
KGD Integral Style.....	Buy 20 Inserts, Get a Free Integral Style Holder	P7
KGD Integral Style for Small Parts.....	Buy 20 Inserts, Get a Free Integral Style Holder	P8



Locate a Distributor

Use our *Locate a Distributor* map at:
www.KyoceraPrecisionTools.com/locate



Buy 20 Inserts | **FREE** Integral Holder
Buy 30 Inserts | **FREE** SwitchBlade Holder

KGD
Integral Style
KGD-S
SwitchBlade Style

KGD GROOVING & CUT-OFF SYSTEM

Promo Code: *KYO-KGD-FREE*

Integral Type and SwitchBlade Type Toolholders for Various Applications

Good Chip Control

Reduces damage of cutting edge caused by crushing chips

Comprehensive Toolholder Lineup

Integral and SwitchBlade style holders available

Long Tool Life and Stable Machining of Various Workpieces

MEGACOAT NANO grade PR1535 is used to machine various materials from steel to stainless steel

Integral Type



Integral Type for Small Dia. Grooving & Cut-Off



SwitchBlade Type



Integral Style: Toolholders with a wide lineup of inserts for various groove widths and depths

SwitchBlade Style: Toolholders with replaceable blades for various types of grooving and cut-off operations

All 2019 Summer / Fall Offers Valid through December 31, 2019

All promotional items are available exclusively through Authorized North American Kyocera Precision Tool Distributors.

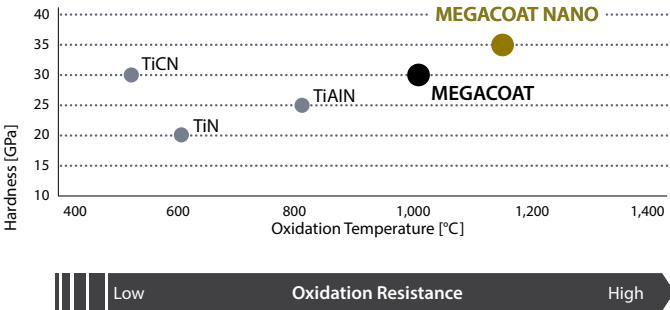
Please use specified Promo Code or Kit Part Number when placing orders. To locate a distributor visit www.kyoceraprecisiontools.com/locate. Prices shown valid in U.S. only.

Integral vs. SwitchBlade Selection Guide

Integral	SwitchBlade
<ul style="list-style-type: none"> • Various toolholder lineup Available for various grooving depths (shallow /medium / deep) Optimum overhang length • Available for low-rigidity machines and workpieces • For small machines with limited work space (Automatic lathe, small lathe, etc.) 	<ul style="list-style-type: none"> • Good for high-mix low-volume production Good for various groove widths by replacing blades • Good for difficult-to-cut material Tough cutting conditions Toolholder cost reduction with replaceable blades • Face grooving is possible by changing blade * Be sure to check the hand compatibility of the blade and toolholder

MEGACOAT / MEGACOAT NANO Coating Technology for Long Tool Life

Coating Properties



PR1535 (MEGACOAT NANO)
For machining of stainless steel

PR1225 (MEGACOAT)
For Steel Grooving and Cut-off

KGD-S 0° SwitchBlade Holders

Buy **30** Inserts and Receive a **FREE** Holder
 Insert sizes may be mixed-and-matched but must fit chosen holder



Shank Angle	Width (in)	Unit Part Number (Toolholder + Blade)	Stock		Dimensions (in)			Insert Width CW (in)		Applicable Inserts See Page 9	
			R	L	Shank Size (Square)	Overall Length	MAX Groove Depth	MIN	MAX		
0°	0.079 (2mm)	KGD $\frac{R}{L}$ 12X-2T17S	●	●	0.75	4.80	0.669 (17mm)	0.079 (2mm)	0.118 (3mm)	GDM2420N020-GM GDM3020N020-GM GDM3020N040-GM	
		16X-2T17S	●	●	1.00	5.78					
	0.118 (3mm)	KGD $\frac{R}{L}$ 12X-3T10S	●	●	0.75	4.52	0.394 (10mm)	0.118 (3mm)	0.157 (4mm)		GDM3020N020-GM GDM3020N040-GM GDM4020N020-GM GDM4020N080-GM
		16X-3T10S	●	●	1.00	5.51					
		KGD $\frac{R}{L}$ 12X-3T20S	●	●	0.75	4.92	0.787 (20mm)				
		16X-3T20S	●	●	1.00	5.90					
	0.157 (4mm)	KGD $\frac{R}{L}$ 12X-4T10S	●	●	0.75	4.52	0.394 10mm)	0.157 (4mm)	0.197 (5mm)	GDM4020N020-GM GDM4020N080-GM GDM5020N040-GM	
		16X-4T10S	●	●	1.00	5.51					
		KGD $\frac{R}{L}$ 12X-4T20S	●	●	0.75	4.92	0.787 (20mm)				
		16X-4T20S	●	●	1.00	5.90					
		KGD $\frac{R}{L}$ 12X-4T25S	●	●	0.75	5.11	0.984 (25mm)				
		16X-4T25S	●	●	1.00	6.10					
	0.197 (5mm)	KGD $\frac{R}{L}$ 12X-5T10S	●	●	0.75	4.52	0.394 (10mm)	0.197 (5mm)	0.236 (6mm)		GDM5020N040-GM GDM6020N040-GM GDM6020N080-GM
		16X-5T10S	●	●	1.00	5.51					
		KGD $\frac{R}{L}$ 12X-5T25S	●	●	0.75	5.11	0.984 (25mm)				
		16X-5T25S	●	●	1.00	6.10					

● : Standard Item

All 2019 Summer / Fall Offers Valid through December 31, 2019

All promotional items are available exclusively through Authorized North American Kyocera Precision Tool Distributors.

Please use specified Promo Code or Kit Part Number when placing orders. To locate a distributor visit www.kyoceraprecisiontools.com/locate. Prices shown valid in U.S. only.

KGD Integral Holders

Buy **20** Inserts and Receive a **FREE** Holder
 Insert sizes may be mixed-and-matched but must fit chosen holder



Width (in)	Toolholder Part Number	Stock		Dimensions (in)			Insert Width CW (in)		Applicable Inserts See Page 9
		R	L	Shank Size (Square)	Overall Length	MAX Groove Depth	MIN	MAX	
0.079 (2mm)	KGD $\frac{R}{L}$ 12-2T17	●	●	0.75	4.92	0.669 (17mm)	0.079 (2mm)	0.118 (3mm)	GDM2420N020-GM GDM3020N020-GM GDM3020N040-GM
	16-2T17	●	●	1.00	5.90				
0.118 (3mm)	KGD $\frac{R}{L}$ 12-3T10	●	●	0.75	4.92	0.394 (10mm)	0.118 (3mm)	0.157 (4mm)	GDM3020N020-GM GDM3020N040-GM GDM4020N020-GM GDM4020N080-GM
	16-3T10	●	●	1.00	5.90				
	KGD $\frac{R}{L}$ 12-3T20	●	●	0.75	4.92	0.787 (20mm)			
	16-3T20	●	●	1.00	5.90				
0.157 (4mm)	KGD $\frac{R}{L}$ 12-4T10	●	●	0.75	4.92	0.394 (10mm)	0.157 (4mm)	0.197 (5mm)	GDM4020N020-GM GDM4020N080-GM GDM5020N040-GM
	16-4T10	●	●	1.00	5.90				
	KGD $\frac{R}{L}$ 12-4T20	●	●	0.75	4.92	0.787 (20mm)			
	16-4T20	●	●	1.00	5.90				
	KGD $\frac{R}{L}$ 16-4T25	●	●	1.00	5.90				
0.197 (5mm)	KGD $\frac{R}{L}$ 12-5T10	●	●	0.75	4.92	0.394 (10mm)	0.197 (5mm)	0.236 (6mm)	GDM5020N040-GM GDM6020N040-GM GDM6020N080-GM
	16-5T10	●	●	1.00	5.90				
	KGD $\frac{R}{L}$ 12-5T17	●	●	0.75	4.92	0.669 (17mm)			
	16-5T17	●	●	1.00	5.90				
	KGD $\frac{R}{L}$ 16-5T25	●	●	1.00	5.90				
0.236 (6mm)	KGD $\frac{R}{L}$ 16-6T15	●	●	1.00	5.90	0.590 (15mm)	0.236 (6mm)	0.236 (6mm)	GDM6020N040GM GDM6020N080GM
	16-6T30	●	●	1.00	5.90	1.181 (30mm)			
0.315 (8mm)	KGD $\frac{R}{L}$ 16-8T25	●	●	1.00	5.90	0.984 (25mm)	0.315 (8mm)	0.315 (8mm)	GDM8030N080GM

● : Standard Item

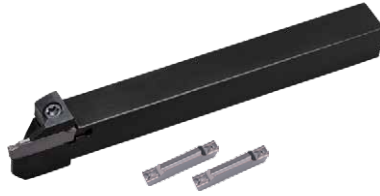
KYOCERA Precision Tools, Inc.

P : 800.823.7284 • F : 828.692.1344 • E : ctsales@kyocera.com

Official Website : www.kyoceraprecisiontools.com • Distributor Website : mykpti.kyocera.com

KGD Integral Holders for Small Parts

Buy **20** Inserts and Receive a **FREE** Holder
 Insert sizes may be mixed-and-matched but must fit chosen holder





Width (in)	Toolholder Part Number	Stock		Dimensions (in)			Insert Width CW (in)		Applicable Inserts See Page 9
		R	L	Shank Size (Square)	Overall Length	Cut-Off Dia.	MIN	MAX	
0.059 (1.5mm)	KGD^{R/L} 6-1.5JX	●	●	0.375	4.75	0.787	-	0.059 (1.5mm)	GDM1516N-003PF
	8-1.5JX	●	●	0.500	4.75	0.944			
0.079 (2mm)	KGD^{R/L} 6-2JX	●	●	0.375	4.75	0.787	0.079 (2mm)	0.118 (3mm)	GDM2020N-003 PF GDM2420N020-GM GDM3020N-003PF GDM3020N020-GM GDM3020N040-GM
	8-2JX	●	●	0.500	4.75	0.944			
	10-2JX	●	●	0.625	4.75	1.259			
0.118 (3mm)	KGD^{R/L} 8-3JX	●	●	0.500	4.75	0.944	0.118 (3mm)	0.157 (4mm)	GDM3020N-003PF GDM3020N020-GM GDM3020N040-GM GDM4020N020-GM GDM4020N080-GM
	10-3JX	●	●	0.625	4.75	1.259			

All 2019 Summer / Fall Offers Valid through December 31, 2019

All promotional items are available exclusively through Authorized North American Kyocera Precision Tool Distributors.

Please use specified Promo Code or Kit Part Number when placing orders. To locate a distributor visit www.kyoceraprecisiontools.com/locate. Prices shown valid in U.S. only.

KGD Inserts

Usage Classification												
● : Light Interruption / 1st Choice ○ : Light Interruption / 2nd Choice	P	Carbon Steel / Alloy Steel							●	●		
	M	Stainless Steel							●	○		
	S	Titanium Alloy (Ti-6Al-4V)							●	○		
Insert	Part Number	Dimensions (in)							MEGACOAT NANO	MEGACOAT		
		CW			RE	INSL	S	PR1535	PR1225			
		inch	mm	Tolerance								
 Low-Feed Rate Cut-Off	GDM 1516N-003PF	0.059	1.5	±0.0016	0.0012	0.630	0.146	●	●			
	2020N-003PF	0.079	2.0		0.0012			●	●			
	2520N-003PF	0.098	2.5		0.0012	0.787	0.169	●	●			
	3020N-003PF	0.118	3.0		0.0012			●	●			
 General Purpose	GDM 2420N-020GM	0.094	2.4	±0.0012	0.008	0.787	0.169	●	●			
	3020N-020GM	0.118	3.0		0.008			●	●			
	3020N-040GM	0.118	3.0		0.016			●	●			
	4020N-020GM	0.157	4.0		0.008			●	●			
	4020N-040GM	0.157	4.0		0.016			●	●			
	4020N-080GM	0.157	4.0		0.032			●	●			
	5020N-040GM	0.197	5.0	±0.0016	0.016			●	●			
	5020N-080GM	0.197	5.0		0.032			●	●			
	6020N-040GM	0.236	6.0		0.016			●	●			
	6020N-080GM	0.236	6.0		0.032			●	●			
	8030N-080GM	0.315	8.0		±0.0020			0.032	1.181	0.217	●	●

● : Standard Item | Inserts sold in 10-piece packs

NEW MACHINE?



GET DEEP DISCOUNTS

*on indexable and solid round products used
to tool-up a new machining center*

*Contact your local distributor for pricing on available items
and start building your package today!*

www.kyoceraprecisiontools.com/locate



KYOCERA Precision Tools, Inc.

102 Industrial Park Road
Hendersonville, NC 28792
Customer Service | 800.823.7284 - Option 1
Technical Support | 800.823.7284 - Option 2



Official Website | www.kyoceraprecisiontools.com
Distributor Website | mykpti.kyocera.com
Email | cuttingtools@kyocera.com



©KYOCERA Precision Tools, Inc.