



2020

WINTER / SPRING

P R O M O P A C K

GROOVING & CUT-OFF Offers



FREE UPS RED Next Day Shipping
on all Drop Ship Promo Pack Orders



VALID THROUGH
June 30, 2020

KPTI Company Overview

Established in April 2014, KPTI unifies two of the world's leading cutting tool manufacturers, Kyocera Tycom Corporation (KTC) and the Cutting Tool Division of Kyocera Industrial Ceramics Corporation (KICC-CT).

The new company creates a combined enterprise that optimizes the strengths of both organizations and facilitates expansion of Kyocera's overall cutting tool-related business in North America. The new combined entity will unify cutting tool resources to create greater efficiencies while positioning the new organization for continued success.

Customers will benefit from a unified sales and support team offering improved customer service and an expanded portfolio of cutting tool products and solutions for the automotive, aerospace, general machining, medical, power generation, printed circuit board and steel markets.

KPTI North American Operations



Costa Mesa, CA

Wapakoneta, OH

Hendersonville, NC



Administration & Manufacturing

- Administration & Accounting Center
- Micro-Tools Manufacturing
- Printed Circuit Board Drill Manufacturing
- Micro-Tools & PCB Sales & Customer Service Center

Steel Tool Holder Manufacturing

- Indexable Drills
- Milling End Mills & Face Mills
- Boring Bars
- Turning and Grooving Holders
- API Ring Groovers

Sales, Tech Center & Marketing

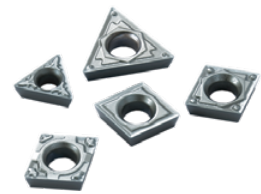
- North American Tech Center
- North American Sales, Marketing & Customer Service Center

KPTI

Manufactured Products



Steel Toolholders for Milling, Turning, Grooving, Threading and Drilling Metal



Indexable metal cutting inserts made of carbide, ceramic, cermet, Cubic Boron Nitride, and Polycrystalline diamond



Solid carbide cutting tools for tight tolerance and micro-diameter metal cutting applications

KPTI Markets Served



Automotive



Aerospace



Medical



Printed Circuit Board



Power Generation

All 2020 Winter / Spring Offers Valid through June 30, 2020

All promotional items are available exclusively through Authorized North American Kyocera Precision Tool Distributors. FREE UPS Red shipping for continental U.S. only. Please use specified Promo Code or Kit Part Number when placing orders. To locate a distributor visit www.kyoceraprecisiontools.com/locate. Prices shown valid in U.S. only.

Explore the Many Ways to Save with the Kyocera 2020 Winter / Spring Promo Pack

In 2020 Kyocera Precision Tools, Inc. is offering more ways to advance your productivity while also reducing your tooling costs. With our wide array of indexable and solid round cutting tools, we strive to be your primary source for high-quality, cost-effective solutions for all of your metal cutting needs. Read below for our latest cost-savings opportunities.

To learn more about KPTI, please visit www.kyoceraprecisiontools.com.

Grooving & Cut-Off Solutions

| | | |
|---|--|--------------------|
| KGD SwitchBlade Style..... | Buy 30 Inserts, Get a Free SwitchBlade Style Holder | P6 |
| KGD-JCT Coolant-Through Integral Style..... | Buy 30 Inserts, Get a Free Integral Coolant Through Style Holder | P7 |
| KGD Integral Style..... | Buy 20 Inserts, Get a Free Integral Style Holder | P8 |
| KGD Integral Style for Small Parts..... | Buy 20 Inserts, Get a Free Integral Style Holder | P9 |

FREE UPS RED Next Day Shipping on Drop Ship Promo Pack Orders

- Free UPS Red available on promo kits shipped directly from Kyocera to the end-user anywhere in the continental U.S.
- Promo items must be in stock and ship complete to qualify for free shipping offer
- Shipments from Kyocera to the Distributor or from the Distributor to the end-user do not qualify for free shipment offer



Locate a Distributor

Use our *Locate a Distributor* map at:
www.KyoceraPrecisionTools.com/locate

KYOCERA Precision Tools, Inc.

P: 800.823.7284 • F: 828.692.1344 • E: ctsales@kyocera.com

Official Website: www.kyoceraprecisiontools.com • Distributor Website: mykpti.kyocera.com



KGD-JCT
Coolant Through

KGD-S
SwitchBlade Style

KGD
Integral Style

KGD GROOVING & CUT-OFF SYSTEM

Promo Code: *KYO-KGD-FREE*

Buy **30** Inserts
FREE
SwitchBlade
KGD Holder

Buy **30** Inserts
FREE
Coolant Through
KGD-JCT Holder

Buy **20** Inserts
FREE
Integral
KGD Holder

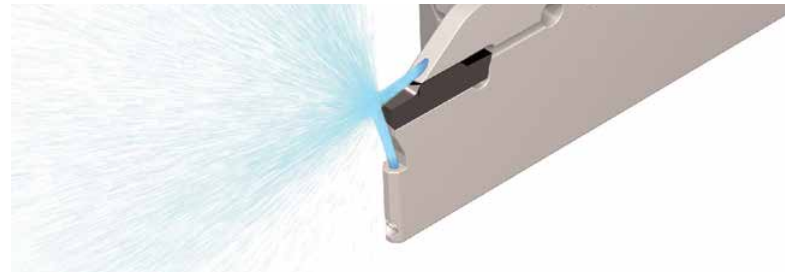
KGD-JCT NEW

Coolant-Through Holders for External Grooving and Cut-Off

Discharges Coolant in Two Directions

Discharges coolant in two directions toward both the rake surface and the flank face of the insert

Excellent chip control and long tool life

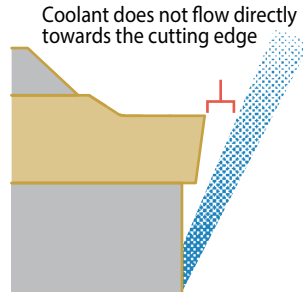
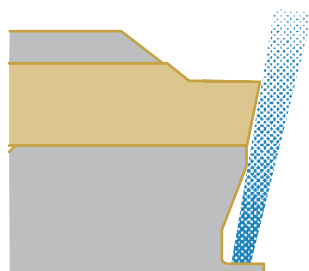


Superior Cooling of the Cutting Edge for Long Tool Life

Coolant towards the rake surface and the flank face of the insert
Directing coolant towards the cutting edge lengthens tool life

KGD-JCT

Competitor E

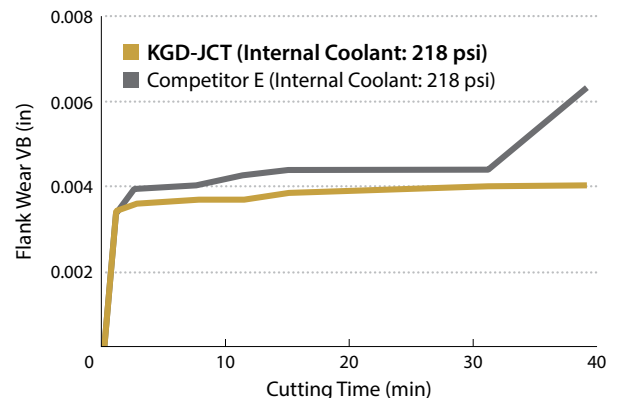


After Machining 39 min



Defect

Wear Resistance Comparison (Internal Evaluation)



Cutting Conditions: $V_c = 590$ sfm, $f = 0.006$ ipr, $d = 0.354$ ", Wet Edge Width 0.158" Workpiece: 4131 Grooving

All 2020 Winter / Spring Offers Valid through June 30, 2020

All promotional items are available exclusively through Authorized North American Kyocera Precision Tool Distributors. FREE UPS Red shipping for continental U.S. only. Please use specified Promo Code or Kit Part Number when placing orders. To locate a distributor visit www.kyoceraprecisiontools.com/locate. Prices shown valid in U.S. only.

Integral Type and SwitchBlade Type Toolholders for Various Applications

Good Chip Control

Reduces damage of cutting edge caused by crushing chips

Comprehensive Toolholder Lineup

Integral and SwitchBlade style holders available

Long Tool Life and Stable Machining of Various Workpieces

MEGACOAT NANO grade PR1535 is used to machine various materials from steel to stainless steel

Integral Type



Integral Type for Small Dia. Grooving & Cut-Off



SwitchBlade Type



Integral Style: Toolholders with a wide lineup of inserts for various groove widths and depths

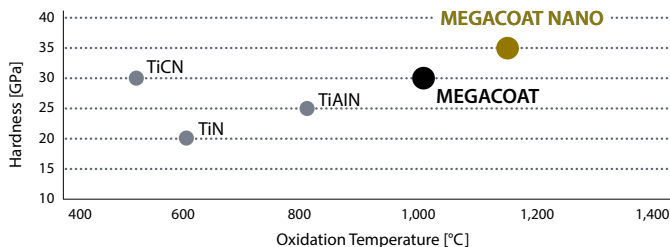
SwitchBlade Style: Toolholders with replaceable blades for various types of grooving and cut-off operations

Integral vs. SwitchBlade Selection Guide

| Integral | SwitchBlade |
|--|---|
| <ul style="list-style-type: none"> • Various toolholder lineup Available for various grooving depths (shallow /medium / deep) Optimum overhang length • Available for low-rigidity machines and workpieces • For small machines with limited work space (Automatic lathe, small lathe, etc.) | <ul style="list-style-type: none"> • Good for high-mix low-volume production Good for various groove widths by replacing blades • Good for difficult-to-cut material Tough cutting conditions Toolholder cost reduction with replaceable blades • Face grooving is possible by changing blade * Be sure to check the hand compatibility of the blade and toolholder |

MEGACOAT / MEGACOAT NANO Coating Technology for Long Tool Life

Coating Properties



PR1535 (MEGACOAT NANO)
For machining of stainless steel

PR1225 (MEGACOAT)
For Steel Grooving and Cut-off



KYOCERA Precision Tools, Inc.

P : 800.823.7284 • F : 828.692.1344 • E : ctsales@kyocera.com

Official Website : www.kyoceraprecisiontools.com • Distributor Website : mykpti.kyocera.com

KGD-S 0° SwitchBlade Holders

Buy **30** Inserts and Receive a **FREE** Holder
 Insert sizes may be mixed-and-matched but must fit chosen holder

FREE 
 Next Day
 Drop Shipping

 See Page 3



| Shank Angle | Width (in) | Unit Part Number (Toolholder + Blade) | Stock | | Dimensions (in) | | | Insert Width CW (in) | | Applicable Inserts See Page 9 |
|----------------|-----------------------------|--|-------|------|------------------------|-------------------|---------------------|-------------------------|--|--|
| | | | R | L | Shank Size (Square) | Overall Length | MAX Groove Depth | MIN | MAX | |
| 0° | 0.079 (2mm) | KGD $\frac{R}{L}$ 12X-2T17S | ● | ● | 0.75 | 4.80 | 0.669 (17mm) | 0.079 (2mm) | 0.118 (3mm) | GDM2420N020-GM GDM3020N020-GM GDM3020N040-GM |
| | | 16X-2T17S | ● | ● | 1.00 | 5.78 | | | | |
| | 0.118 (3mm) | KGD $\frac{R}{L}$ 12X-3T10S | ● | ● | 0.75 | 4.52 | 0.394 (10mm) | 0.118 (3mm) | 0.157 (4mm) | |
| | | 16X-3T10S | ● | ● | 1.00 | 5.51 | | | | |
| | | KGD $\frac{R}{L}$ 12X-3T20S | ● | ● | 0.75 | 4.92 | 0.787 (20mm) | | | |
| | | 16X-3T20S | ● | ● | 1.00 | 5.90 | | | | |
| | 0.157 (4mm) | KGD $\frac{R}{L}$ 12X-4T10S | ● | ● | 0.75 | 4.52 | 0.394 10mm) | 0.157 (4mm) | 0.197 (5mm) | GDM4020N020-GM GDM4020N080-GM GDM5020N040-GM |
| | | 16X-4T10S | ● | ● | 1.00 | 5.51 | | | | |
| | | KGD $\frac{R}{L}$ 12X-4T20S | ● | ● | 0.75 | 4.92 | 0.787 (20mm) | | | |
| | | 16X-4T20S | ● | ● | 1.00 | 5.90 | | | | |
| | | KGD $\frac{R}{L}$ 12X-4T25S | ● | ● | 0.75 | 5.11 | 0.984 (25mm) | | | |
| | | 16X-4T25S | ● | ● | 1.00 | 6.10 | | | | |
| 0.197 (5mm) | KGD $\frac{R}{L}$ 12X-5T10S | ● | ● | 0.75 | 4.52 | 0.394 (10mm) | 0.197 (5mm) | 0.236 (6mm) | GDM5020N040-GM GDM6020N040-GM GDM6020N080-GM | |
| | 16X-5T10S | ● | ● | 1.00 | 5.51 | | | | | |
| | KGD $\frac{R}{L}$ 12X-5T25S | ● | ● | 0.75 | 5.11 | 0.984 (25mm) | | | | |
| | 16X-5T25S | ● | ● | 1.00 | 6.10 | | | | | |

● : Standard Item

All 2020 Winter / Spring Offers Valid through June 30, 2020

All promotional items are available exclusively through Authorized North American Kyocera Precision Tool Distributors. FREE UPS Red shipping for continental U.S. only. Please use specified Promo Code or Kit Part Number when placing orders. To locate a distributor visit www.kyoceraprecisiontools.com/locate. Prices shown valid in U.S. only.



KGD-JCT Coolant Through Integral Holders

Buy **30** Inserts and Receive a **FREE** Holder
 Insert sizes may be mixed-and-matched but must fit chosen holder

FREE
 Next Day
 Drop Shipping

 See Page 3



| Width (in) | Toolholder Part Number | Stock | | Dimensions (in) | | | Insert Width CW (in) | | Applicable Inserts See Page 9 |
|-------------|--------------------------------|-------|---|---------------------|----------------|------------------|----------------------|-------------|--|
| | | R | L | Shank Size (Square) | Overall Length | MAX Groove Depth | MIN | MAX | |
| 0.118 (3mm) | KGD 12-3T20JCT | ● | ● | 0.75 | 5.00 | 0.787 (20mm) | 0.118 (3mm) | 0.157 (4mm) | GDM3020N020-GM GDM3020N040-GM GDM4020N020-GM GDM4020N080-GM |
| | 16-3T20JCT | ● | ● | 1.00 | 5.00 | | | | |
| 0.157 (4mm) | KGD 12-4T20JCT | ● | ● | 0.75 | 5.00 | 0.787 (20mm) | 0.157 (4mm) | 0.197 (5mm) | |
| | 16-4T20JCT | ● | ● | 1.00 | 5.00 | | | | |
| | KGD 16-4T25.4JCT | ● | ● | 1.00 | 5.00 | 1.000 (25.4mm) | | | |

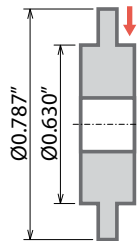
* JCT coolant piping hardware must be purchased separately

● : Standard Item

Case Studies

Ring - 5120 (Equivalent)

Vc = 525 sfm
 (n = 3,200 rpm)
 D.O.C. = 0.098"
 f = 0.0028 ipr
 Wet (Water Soluble), Normal Pressure
 KGDR2020K-3T10JCT
 GDM3020M-025PM PR1225



Tool Life

KGD-JCT (Internal Coolant) **9,000 pcs / edge** **x1.5**

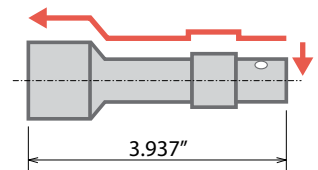
Competitor H (External Coolant) **6,000 pcs / edge**

Change to KGD-JCT (internal coolant) from Competitor H (external coolant) extended tool life by 1.5 times.

(User Evaluation)

Valve - Free Cutting Steel

Vc = 525 sfm
 D.O.C. = 0.551"
 f = 0.0047-0.0059 ipr
 Wet (Water Soluble), Normal Pressure
 KGDR2525K-3T20JCT
 GDM3020M-040GM PR1535



Tool Life

KGD-JCT (Internal Coolant) **1,000 pcs / edge**

Competitor I (Internal Coolant) **1,000 pcs / edge**

KGD-JCT maintained stable machining for the required number of pieces
 Better chip control and surface finish

Chip Control
Good

Surface Finish
Good

(User Evaluation)

KGD Integral Holders

Buy **20** Inserts and Receive a **FREE** Holder
 Insert sizes may be mixed-and-matched but must fit chosen holder

FREE 
 Next Day
 Drop Shipping

 See Page 3



| Width (in) | Toolholder Part Number | Stock | | Dimensions (in) | | | Insert Width CW (in) | | Applicable Inserts See Page 9 |
|-------------|----------------------------------|-------|---|---------------------|----------------|------------------|----------------------|-------------|--|
| | | R | L | Shank Size (Square) | Overall Length | MAX Groove Depth | MIN | MAX | |
| 0.079 (2mm) | KGD $\frac{R}{L}$ 12-2T17 | ● | ● | 0.75 | 4.92 | 0.669 (17mm) | 0.079 (2mm) | 0.118 (3mm) | GDM2420N020-GM GDM3020N020-GM GDM3020N040-GM |
| | 16-2T17 | ● | ● | 1.00 | 5.90 | | | | |
| 0.118 (3mm) | KGD $\frac{R}{L}$ 12-3T10 | ● | ● | 0.75 | 4.92 | 0.394 (10mm) | 0.118 (3mm) | 0.157 (4mm) | GDM3020N020-GM GDM3020N040-GM GDM4020N020-GM GDM4020N080-GM |
| | 16-3T10 | ● | ● | 1.00 | 5.90 | | | | |
| | KGD $\frac{R}{L}$ 12-3T20 | ● | ● | 0.75 | 4.92 | 0.787 (20mm) | | | |
| | 16-3T20 | ● | ● | 1.00 | 5.90 | | | | |
| 0.157 (4mm) | KGD $\frac{R}{L}$ 12-4T10 | ● | ● | 0.75 | 4.92 | 0.394 (10mm) | 0.157 (4mm) | 0.197 (5mm) | GDM4020N020-GM GDM4020N080-GM GDM5020N040-GM |
| | 16-4T10 | ● | ● | 1.00 | 5.90 | | | | |
| | KGD $\frac{R}{L}$ 12-4T20 | ● | ● | 0.75 | 4.92 | 0.787 (20mm) | | | |
| | 16-4T20 | ● | ● | 1.00 | 5.90 | | | | |
| | KGD $\frac{R}{L}$ 16-4T25 | ● | ● | 1.00 | 5.90 | 0.984 (25mm) | | | |
| 0.197 (5mm) | KGD $\frac{R}{L}$ 12-5T10 | ● | ● | 0.75 | 4.92 | 0.394 (10mm) | 0.197 (5mm) | 0.236 (6mm) | GDM5020N040-GM GDM6020N040-GM GDM6020N080-GM |
| | 16-5T10 | ● | ● | 1.00 | 5.90 | | | | |
| | KGD $\frac{R}{L}$ 12-5T17 | ● | ● | 0.75 | 4.92 | 0.669 (17mm) | | | |
| | 16-5T17 | ● | ● | 1.00 | 5.90 | | | | |
| | KGD $\frac{R}{L}$ 16-5T25 | ● | ● | 1.00 | 5.90 | 0.984 (25mm) | | | |
| 0.236 (6mm) | KGD $\frac{R}{L}$ 16-6T15 | ● | ● | 1.00 | 5.90 | 0.590 (15mm) | 0.236 (6mm) | 0.236 (6mm) | GDM6020N040GM GDM6020N080GM |
| | 16-6T30 | ● | ● | 1.00 | 5.90 | 1.181 (30mm) | | | |
| 0.315 (8mm) | KGD $\frac{R}{L}$ 16-8T25 | ● | ● | 1.00 | 5.90 | 0.984 (25mm) | 0.315 (8mm) | 0.315 (8mm) | GDM8030N080GM |

● : Standard Item

All 2020 Winter / Spring Offers Valid through June 30, 2020

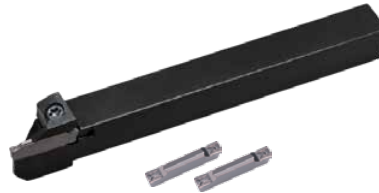
All promotional items are available exclusively through Authorized North American Kyocera Precision Tool Distributors. FREE UPS Red shipping for continental U.S. only. Please use specified Promo Code or Kit Part Number when placing orders. To locate a distributor visit www.kyoceraprecisiontools.com/locate. Prices shown valid in U.S. only.

KGD Integral Holders for Small Parts

Buy **20** Inserts and Receive a **FREE** Holder
 Insert sizes may be mixed-and-matched but must fit chosen holder



FREE 
 Next Day
 Drop Shipping

 See Page 3



| Width (in) | Toolholder Part Number | Stock | | Dimensions (in) | | | Insert Width CW (in) | | Applicable Inserts See Below |
|---------------|---|-------|---|---------------------|----------------|--------------|----------------------|---------------|---|
| | | R | L | Shank Size (Square) | Overall Length | Cut-Off Dia. | MIN | MAX | |
| 0.059 (1.5mm) | KGD $\frac{1}{2}$ 6-1.5JX | ● | ● | 0.375 | 4.75 | 0.787 | - | 0.059 (1.5mm) | GDM1516N-003PF |
| | 8-1.5JX | ● | ● | 0.500 | 4.75 | 0.944 | | | |
| 0.079 (2mm) | KGD $\frac{1}{2}$ 6-2JX | ● | ● | 0.375 | 4.75 | 0.787 | 0.079 (2mm) | 0.118 (3mm) | GDM2020N-003 PF GDM2420N020-GM GDM3020N-003PF GDM3020N020-GM GDM3020N040-GM |
| | 8-2JX | ● | ● | 0.500 | 4.75 | 0.944 | | | |
| | 10-2JX | ● | ● | 0.625 | 4.75 | 1.259 | | | |
| 0.118 (3mm) | KGD $\frac{1}{2}$ 8-3JX | ● | ● | 0.500 | 4.75 | 0.944 | 0.118 (3mm) | 0.157 (4mm) | GDM3020N-003PF GDM3020N020-GM GDM3020N040-GM GDM4020N020-GM GDM4020N080-GM |
| | 10-3JX | ● | ● | 0.625 | 4.75 | 1.259 | | | |

KGD Inserts

| Usage Classification | | | | | | | | | | |
|--|------------------------|----------------------------|-----|-----------|--------|-------|-------|---------------|----------|---|
| ● : Light Interruption / 1st Choice ☉ : Light Interruption / 2nd Choice | P | Carbon Steel / Alloy Steel | | | | | | | ● | ● |
| | M | Stainless Steel | | | | | | | ☉ | ☉ |
| | S | Titanium Alloy (Ti-6Al-4V) | | | | | | | ● | ● |
| Insert | Part Number | Dimensions (in) | | | | | | MEGACOAT NANO | MEGACOAT | |
| | | CW | | | RE | INSL | S | PR1535 | PR1225 | |
| | | inch | mm | Tolerance | | | | | | |
|  Low-Feed Rate Cut-Off | GDM 1516N-003PF | 0.059 | 1.5 | ±0.0016 | 0.0012 | 0.630 | 0.146 | ● | ● | |
| | 2020N-003PF | 0.079 | 2.0 | | 0.0012 | | | 0.787 | 0.169 | ● |
| | 2520N-003PF | 0.098 | 2.5 | | 0.0012 | ● | ● | | | |
| | 3020N-003PF | 0.118 | 3.0 | | 0.0012 | ● | ● | | | |
|  General Purpose | GDM 2420N-020GM | 0.094 | 2.4 | ±0.0012 | 0.008 | 0.787 | 0.169 | ● | ● | |
| | 3020N-020GM | 0.118 | 3.0 | | 0.008 | | | ● | ● | |
| | 3020N-040GM | 0.118 | 3.0 | | 0.016 | | | ● | ● | |
| | 4020N-020GM | 0.157 | 4.0 | | 0.008 | | | ● | ● | |
| | 4020N-040GM | 0.157 | 4.0 | | 0.016 | | | ● | ● | |
| | 4020N-080GM | 0.157 | 4.0 | | 0.032 | | | ● | ● | |
| | 5020N-040GM | 0.197 | 5.0 | ±0.0016 | 0.016 | | | ● | ● | |
| | 5020N-080GM | 0.197 | 5.0 | | 0.032 | | | ● | ● | |
| | 6020N-040GM | 0.236 | 6.0 | | 0.016 | | | ● | ● | |
| | 6020N-080GM | 0.236 | 6.0 | ±0.0020 | 0.032 | | | ● | ● | |
| | 8030N-080GM | 0.315 | 8.0 | | 0.032 | | | 1.181 | 0.217 | ● |

● : Standard Item | Inserts sold in 10-piece packs

KYOCERA Precision Tools, Inc.

P : 800.823.7284 • F : 828.692.1344 • E : ctsales@kyocera.com

Official Website : www.kyoceraprecisiontools.com • Distributor Website : mykpti.kyocera.com

NEW MACHINE?



GET DEEP DISCOUNTS

*on indexable and solid round products used
to tool-up a new machining center*

*Contact your local distributor for pricing on available items
and start building your package today!*

www.kyoceraprecisiontools.com/locate



KYOCERA Precision Tools, Inc.

102 Industrial Park Road
Hendersonville, NC 28792
Customer Service | 800.823.7284 - Option 1
Technical Support | 800.823.7284 - Option 2



Official Website | www.kyoceraprecisiontools.com
Distributor Website | mykpti.kyocera.com
Email | cuttingtools@kyocera.com



©KYOCERA Precision Tools, Inc.